

vital life foundation annual report

Vital Life Foundation supports organizations that contribute to the lives of seniors, staff members, and the community at large. We believe that community health is every bit as important as personal health.





2011

Betty Madaras, Marquis Centennial

Letter from the Board

Vital Life, a Marquis and Consonus Foundation, experienced a defining year in 2011. VLF continues to grow with Spirit Club membership totaling 703 by the end of the year. Revenue grew from \$142,904 in 2008 to \$575,262 in 2011. Vital Volunteer contributions grew 9.4 percent from 2010 to 2011. Despite continued economic hardships within the industry, we continue to grow.

We regularly see those with the least available assets often have the most generous hearts. It is no surprise that one of the single largest contributors to Spirit Club is a Certified Nursing Assistant who is a single mother with two children. She is not alone in her generosity as Marquis and Consonus Spirit Club members gave a total of \$111,062. In addition to the generosity of our employees, our revenue growth was substantially aided by external fundraisers including a spectacular event we called THE STOMP. Over the past year our external fundraising efforts have produced \$341,941, with \$297,533 of that coming from THE STOMP.

Foundation business has always been conducted by the board members and a handful of volunteers. VLF growth allowed us to hire our first foundation director in 2011. Mary Amick is an industry veteran and we are delighted to put her skills and enthusiasm to work as a full-time VLF director.

Most importantly, our growth has allowed us to continue to support charities that fit with our mission:

To support organizations and programs that provide meaning and vitality to the lives of seniors and staff members living and working in Long Term Care.

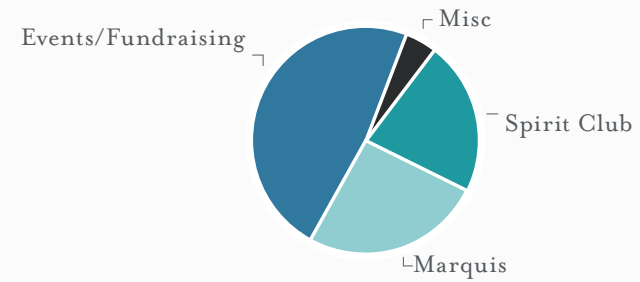
We are enjoying tremendous success in fulfilling this mission. For that we owe a huge debt of gratitude to our generous staff, our caring residents, and contributors from the multitude of relationships we have established.

Board of Directors

Angie Fogg, Chairperson
Charles Bloom, Vice-Chair
Staci Tone, Treasurer
Jennifer Hoffer, Secretary
Kathy LeVee, Director
Dale Glasser, Director
Victor Kisch, Director
Phil Fogg, Director
Steve Fogg, Director
Julie Kresl, Director
Mary Amick, Foundation Director

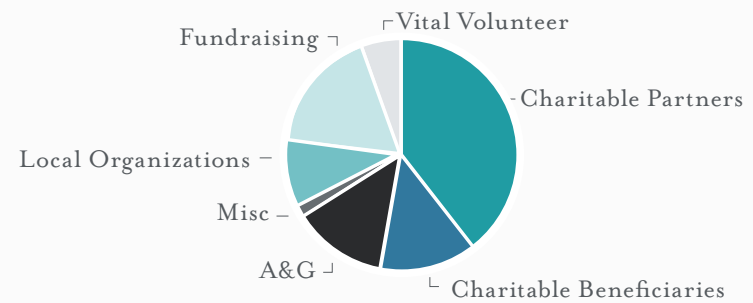
LIFE, WELL LIVED.

Financials



REVENUE

Spirit Club	\$111,069.42	19.31%
Marquis	\$122,251.92	21.25%
Events/Fundraising	\$327,986.80	57.02%
Misc	\$13,954.29	2.43%
TOTAL REVENUE	\$575,262.43	



EXPENSES

Charitable Partners	\$147,862.26	33.51%
Charitable Beneficiaries	\$63,104.98	14.30%
Local Organizations	\$23,970.00	5.43%
Vital Volunteer	\$14,570.50	3.30%
A&G	\$72,235.37	16.37%
Misc	\$1,439.52	0.33%
Fundraising	\$118,094.79	26.76%
TOTAL EXPENSE	\$441,277.42	

The 2011 expenses are reflective of 2010 donations. All donations commensurate with the previous year's fundraising. 2011 revenue will drive 2012.

2011 Highlights

Charitable Partners

Alzheimer's Association | VLF raised and donated over \$24,000 for the Alzheimer's Association in 5 states. Wii Bowling was a focus with 22 facilities and Consonus Pharmacy participating. The second annual Laughter Is The Best Medicine comedy show raised over \$6,250 and the audience grew to nearly 400 people.

American Heart Association | The company wide Walking Challenge grew to a team of 1073 participants with 647 people completing the 4 week challenge. The \$10 contribution per employee who completed the walk resulted in a \$6,470 check to the aha. Combined with facility fundraisers, Legend donations, and Vital Volunteer donations aha received a total of \$25,440 in 2011.

Meals on Wheels | Our relationship with Meals on Wheels increased in 2011 resulting in a total donation of \$5,000. This amount was made up of sponsorships, participation in the Valentine-O-Gram program, facility fundraisers and Vital Volunteer contributions. This year has seen a rise of residents supporting Meals on Wheels through the Vital Volunteer match.

Ronald McDonald House Charities | A major part of this year's total contribution of \$35,000 was through the renovation of one of the rooms in the West House. The stark white room turned into something House Beautiful would envy. 10 facilities participated in the Elf Project and raised money and gifts totaling \$6,700 for both RMHC houses. There were multiple gifts for everyone receiving treatment during the Christmas season with enough gifts for each child to receive a toy throughout the year. Facilities also contributed time and energy by providing food and preparing meals for the children and families that use the houses during therapy.

Susan G. Komen | SKG received \$14,450 in 2011 through fundraisers and participation in Race for the Cure in 5 states. Most notable is Marquis Shaw Mountain who had a team of 85 people at their local race, 45 of which were residents who had passion for the cause.

Charitable Beneficiaries

\$63,005 was distributed between 8 charitable beneficiaries including:

Boys & Girls Aid Society	\$16,086
CASA	\$2,500
Children's Cancer Association	\$17,728
Friends of the Children	\$5,000
JFR Foundation	\$5,041
Medical Teams International	\$10,000
Our House	\$1,650
United Cerebral Palsy	\$5,000

Vital Volunteers

The Jessie F. Richardson Foundation

One of Vital Life Foundation's charitable beneficiaries is the Jessie F. Richardson Foundation. Over the past two years, Marquis and Consonus staff members have joined the Jessie F. Richardson Foundation in traveling to Jinotepe, Nicaragua to improve the lives of elderly residents living in the only nursing home in the city. Residents often do not have working toilets, roofs to keep the torrential rains out, trained caregivers, or medications to treat their conditions. Recently a group of RN's, therapists, and systems experts from Marquis and Consonus took a big chance with authorities and traveled through customs with \$1,500 worth of medications donated by Consonus Pharmacy.

Not only did staff get involved, but when residents and employees realized that people living in the Jinotepe nursing home did not have warm blankets, residents from Marquis Forest Grove, Marquis Piedmont, and Marquis Vermont Hills, along with 13 people from the Consonus Pharmacy, volunteered their time to make a blanket for each of the 42 residents living in Jinotepe. The residents' excitement and appreciation of owning their own blankets moved our volunteers to tears.

It is the intention of the Vital Life Foundation to continue supporting the JFR Foundation through expertise, physical labor, and monetary support, thus helping them live their mission.

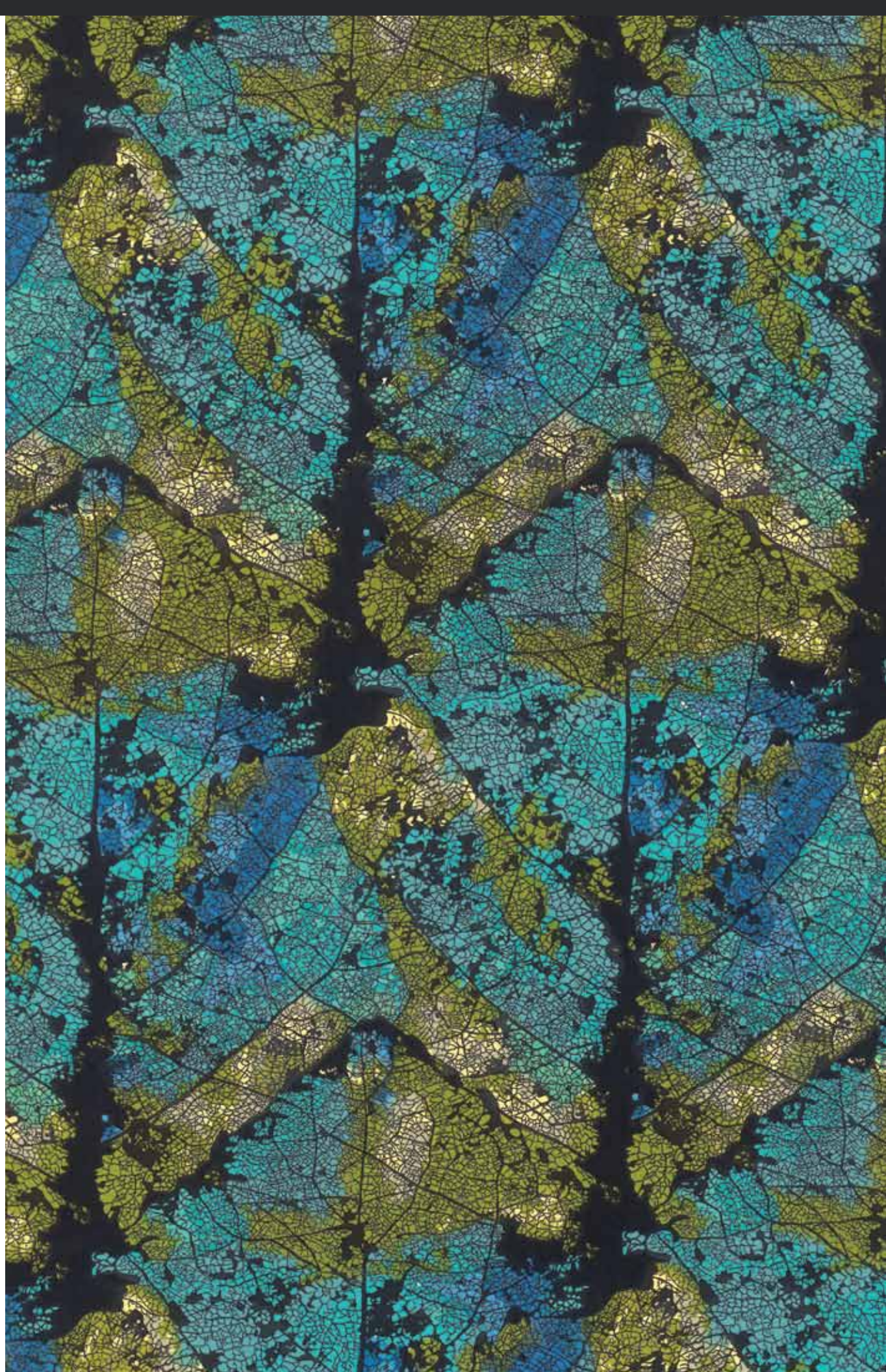
Friends of the Children

Friends of the Children (FOTC) is VLF's newest beneficiary. Their mission of providing mentors for disadvantaged youth from age 5 through high school graduation has touched the hearts of both staff and residents. The goals and values of FOTC are a match with those of VLF and residents and employees alike have taken up the cause with volunteer hours and contributions. Children have gotten to know residents by attending holiday parties and open houses. Mt Tabor arranged a game and pizza night. Staff from Marquis Oregon City and Marquis Powellhurst decorated FOTC houses at Christmas. Mt Tabor and Powellhurst and the FOTC are embarking on a General Mills grant called "Nourishing Body, Mind, and Spirit" awarded to VLF that pairs children and residents in growing and preparing healthy foods.

teamwork

Giving back to the community has always been a significant part of the Marquis Companies and Consonus Healthcare philosophy. Bringing the causes we support to the forefront is important to us, and that's why we've formed the Vital Life Foundation. The foundation is the vehicle for our commitment to supporting youth wellness, education, families, women, and seniors.

vitallifefoundation.org



Thanks to our donors and volunteers, revenue increased by nearly \$134,000 in 2011.

Donors

Vital Volunteers | Marquis and Consonus employees who have a personal involvement in charitable giving through volunteer hours or monetary donations. The Vital Life Foundation was able to match their charitable giving with a monetary donation.

ANDREA PARKS ANGELA WYKES ANN BRODIE KROPE ANNA BROWN ANNE RIEKE ANTHONY LAFLEN	ASELE BUGINGO BERNICE BROWN CHARLES BLOOM CHERYL CONKLIN CHRISTINE MIZE COURTNEY CORDA	DANIEL CANCHOLA ELIZABETH GOMES EMILY SKIPPER EVA SMITH FAYE FOSTER HEATHER MIZNER	HEATHER PARKER HOLLY DAIGLE JUDITH LITTLE JULIE BARNES JULIE EATON JULIE GOULD	KARINA GARCIA KARLEY BRNUSAK KATHY KEMP KEALY ADAMS KELSEY LARSEN KRISSA FERGUSON	LANI BENNETT MARK SCHULZ MARY AMICK MATHEW FELDMAR MEAGAN ENGLISH NICK BALL	PATTY MAGID-VOLK PETER DESIGNORE RUBEN HINOVOS SCOTT MITCHELL SHERRY SCHUTZ STACI TONE	SUDHA FATIMA SUE LUND TAMI LAFLEN TASHENA TAYLOR TRACY FRITTS VERITY PANG
------------------------------------------------------------------------------------------------	-------------------------------------------------------------------------------------------------------	---------------------------------------------------------------------------------------------------	-----------------------------------------------------------------------------------------------	--------------------------------------------------------------------------------------------------	--------------------------------------------------------------------------------------------	-------------------------------------------------------------------------------------------------------	------------------------------------------------------------------------------------------

Corporate Donors

1ST INDEPENDENT LEASING ACCURATE BUSINESS RESULTS ACP ADVANCED EYECARE PROFESSIONALS ADVANCED VENDING ALPHA GRAPHICS AMERIPRISE FINANCIAL BEAUMONT FLOWERS	BOB NAGEL BOYD'S COFFEE COLLIERS COLUMBIA ROOFING CONTEMPORARY CAPITAL CORNERSTONE CARE OPTIONS CW CAPITAL D&D RECYCLING DANBOISE MECHANICAL	DIABLO VALLEY FOUNDATION FOR THE AGING DIRECT SUPPLY DUCK POND CELLARS EMERIO DESIGN ENCOMPASS ERWIN QUARTER HORSES GO DYNAMIC GUARDIAN HOME CARE	HB ELECTRONICS HELSEK INDUSTRIES JDA KAM'S FINE FOODS KINETIC GROUP KOIDA KPD LIFEWISE LOCKTON INSURANCE MANAGED HEALTHCARE ASSOCIATES	MARQUIS OREGON CITY MARQUIS WILSONVILLE MARTIN-HARRIS MARYLAND ELECTRIC METRO WEST MIDCAP FINANCIAL MORAGA ROYALE MORTON AND ASSOCIATES	MT. HOOD SOLUTIONS NAVIGATOR MHA PACIFIC SEAFOOD PARADISE HARLEY DAVIDSON BROTHERS PARKVIEW ACRES CARE PAVILION CONSTRUCTION PCC	PINNACLE QUALITY INSIGHT PMG ABATEMENT CONTRACTOR PRESTIGE MOVING AND STORAGE PRODRIVE PUMPKIN RIDGE R/WEST STOEL RIVES STRUCTURED COMMUNICATION SYSTEMS	SYSCO TACOMA LUTHERAN THE NATHANSON GROUP THE PRIVATE BANK THE SAUNDERS COMPANY TWINMED UHF UMPQUA BANK WEST COAST EVENT PRODUCTIONS
------------------------------------------------------------------------------------------------------------------------------------------------------------------------------	----------------------------------------------------------------------------------------------------------------------------------------------------------------------	------------------------------------------------------------------------------------------------------------------------------------------------------------------------	-------------------------------------------------------------------------------------------------------------------------------------------------------------------	--------------------------------------------------------------------------------------------------------------------------------------------------------------	----------------------------------------------------------------------------------------------------------------------------------------------------	----------------------------------------------------------------------------------------------------------------------------------------------------------------------------	-----------------------------------------------------------------------------------------------------------------------------------------------------------

Individual Donors | Individual donors may include employees of Marquis and Consonus who made donations beyond that of the Spirit Club.

ABIGAIL HOWARD ADAM LAUSER AJIT & MARJORIE SABNIS ALLISON DEHAAN AMANDA ELLIOTT AMI ATABI AMY BUCHER AMY HALE ANA GOGUT ANN NEUENSCHWANDER ANNE RIEKE ANURADHA & JAYANT SATHAYE ART SASSE AUSTIN SHIRLEY BARB MARTINS BECKY BEARDON BEV CHRISTMAN BILL & JEN RUBENSTEIN BILL & LOIS GASKILL BOB & MARY COEN BOBBI JO SHRUM BRIAN & CHERYL HANNA BRIAN & TINA KENT BRUNO PERI CARL & JACKIE EVANS CAROL GREBIN CAROLYN DENARDO CASEY HAZLETT CHARISSE FLORY	CHARLES HENIKEN CHARLES SAUVAIN CHELSEA PINARD CHRIS & KIMBERLY SIMONS CHRISTINA & TEDDY MONTOYA CHRISTINE WARDEN D. SHARON WITSBERGER DALE & LINDA GLASSER DANIEL & DEBRA SATERN DARREL LOY DAVE BURNS DAVE LEWIS DEBRA SAJOVIC DENNIS & REBECCA RICE DIANE MCCARRICK DONALD COGDILL DONALD & IRENE STEFFEN DONALD & JO ANN PETER DORIS LINKLETTER DOROTHY LAMBERT DOROTHY SCHEPPKE DOUG UNDERWOOD DOUG & JODY KOREY DOUGLAS BROWN DOUGLAS DENARDO DOUGLAS & SALLY HICKMAN	DR. HOWARD & SUSAN GRAITZER DR. INGRID TAFT EDNA LOVVOLD EDWARD & LINDA LINDSTROM ELEANOR WEISZ ELIA BACHMAN ELIZABETH HOBURKA EMI SOMEKAWA ERIC & MARLI LITNER ERICA DENARDO ERIN SPRANDO ESTELLE LILE FRANK AND NELL KUONEN FUNAN HU HSU GARY RUTAN GEORGE COCHRAN GEORGE & CHARLOTTE DILSAVER GREG WOLFE HENRY & KATHLEEN ULANSKI HOPE MURPHY HOWARD GRAITZER, M.D. INGRID TAFF, MD IRENE MCCARRICK JACK WARNER JACK & KATHLEEN MELIGAN	JACK AND KATHLEEN INMAN JAMES & BARBARA WELLS JAMES & DAWN JACKSON JAMES AND ALINA STAUB JANE THOMAS JANE TURNER-HART JANICE EGNER JEAN WELTER JEFF & TRACY POWELSON JENNIFER VAZQUEZ JESSICA FLEMING JIM ROLFE JIM & MEG CARLSON JIM & MICHELLE NIELSON JOANNE WEBB JOE RUDD JOE & SANDY IVANICH JOHN BARNES JOHN MARTIN JOHN GRICE JOHN PISTOLESI JOHN & GWEN FISHER JOHN & JOANN LEE JOHN & VERA COOK JUDITH BAMBURAK	JUNE ROSS JUNE TARA KAREN ALKHALEDY KARAN KUTSURELIS KAREN MAYERS KARINA GARCIA KATHERINE WILSON KATHY LOUIE KATHY & JEFF LEVEE KELLI CARR KELLIE & TRACY VAVROSKY KELLY & JULIE LANG KEVIN & JACKIE HARPER KIRK HANNA KYM & HOD WELLS LAMBERT OLSZEWSKI LANETTE DAY LEE DOUGLAS LEO WECKERLE LINDSAY HENDERSON LYNNE HUGHS LYNNETTE RENFER M.F. MCMAHON MARGUERITE POLEO MARJORIE MORRIS MARK & BRENDA CARPENTER MARLIN & CAROLYN HUTTON MARY AMICK MARY LOVVOLD	MARY JO & JIM PENING MATT & PAULA DUNHAM MAURICE DEWOLF MCKENZIE DODGE MEAGAN FISHER MICHAEL & PATTI SCHUSTER MIKE & KRISTEN TOWN MIKE & STASIA LARSEN MINOO NOWAK MOLLY CONE MOZELLE & CARL WOOD MYRTLE WOOD NATALIE & BILL ELWELL NEIL MARSHALL NICOLE EASLEY NOREEN QUIROZ P. BARRETT, JR. PAT & BRENDA HOGAN PATRICIA COLLINS PAUL COSBY PAUL & KIM GOUDY PAUL MINTER PHIL RICHARDS PHIL & ANGIE FOGG PHIL & KAE FOGG RAE AND JACK MARTIN	RAYMOND & PHYLLIS KRUEGER RAYMUND CABALES REVATI MUJUMDAR RHONDA ANDERSON RICHARD VACCA RICHARD & MARY ANNE MCCARRICK ROBERT ANDERSEN ROBERT & CHERI WEEKS ROBERT & JENNIFER WHITE ROBERT & JOYCE COLLINS ROBERTA SACHS ROSA MARTINEZ RUTH NELSEN SAM DENDRINOS SARAH CLASEN SARAH EDMONDS SCOTT JENKINS SCOTT & ERIN ANDREWS SCOTT & JUNIPER FITZWILSON SCOTT & LUCY HOWARD SCOTT & PATRICIA BELT SHARON CATES SIDNEY RAINES STACEY & JIM KUSTERS STACI TONE	STEVE & LISA FOGG STUART ALLEN SUE LIENHARD SUSAN DOHERTY TAMI & ANTHONY LAFLEN TERESA OHMART TERI OELRICH TERI & GREG FERREIRA TERRI KAM TERRY & MARY HUNT TIMOTHY SPEARS TODD & JEN HARRIS TOMMY WONG TRACEY REMINGTON VANCE & BARBARA BIGHAM VERA PHILLIPS VERDA BURR VICKI BURNS VINCENT WILLEFORD VIOLA ROBINSON WALLACE & VERA SATERN WILLIAM & SABRINA CARVER WILMA & TERRY EAMES YVONNE STEWART ZHILLA & MANSOUR SAKI
------------------------------------------------------------------------------------------------------------------------------------------------------------------------------------------------------------------------------------------------------------------------------------------------------------------------------------------------------------------------------------------------------------------------------------------------------------------------------------------------------------------------------------------------	--------------------------------------------------------------------------------------------------------------------------------------------------------------------------------------------------------------------------------------------------------------------------------------------------------------------------------------------------------------------------------------------------------------------------------------------------------------------------------------------------------------------------------------------------------	--------------------------------------------------------------------------------------------------------------------------------------------------------------------------------------------------------------------------------------------------------------------------------------------------------------------------------------------------------------------------------------------------------------------------------------------------------------------------------------------------------------------	--------------------------------------------------------------------------------------------------------------------------------------------------------------------------------------------------------------------------------------------------------------------------------------------------------------------------------------------------------------------------------------------------------------------------------------------------------------------------------------------------	-------------------------------------------------------------------------------------------------------------------------------------------------------------------------------------------------------------------------------------------------------------------------------------------------------------------------------------------------------------------------------------------------------------------------------------------------------------------------------------------------------------------------------------------------------	--------------------------------------------------------------------------------------------------------------------------------------------------------------------------------------------------------------------------------------------------------------------------------------------------------------------------------------------------------------------------------------------------------------------------------------------------------------------------------------------------------------------------	---------------------------------------------------------------------------------------------------------------------------------------------------------------------------------------------------------------------------------------------------------------------------------------------------------------------------------------------------------------------------------------------------------------------------------------------------------------------------------------------------------------------------------------	-------------------------------------------------------------------------------------------------------------------------------------------------------------------------------------------------------------------------------------------------------------------------------------------------------------------------------------------------------------------------------------------------------------------------------------------------------------------------------------------------------

there is no such thing as a self-made man.

You will reach your goals only with the help of others.

— George Shinn

